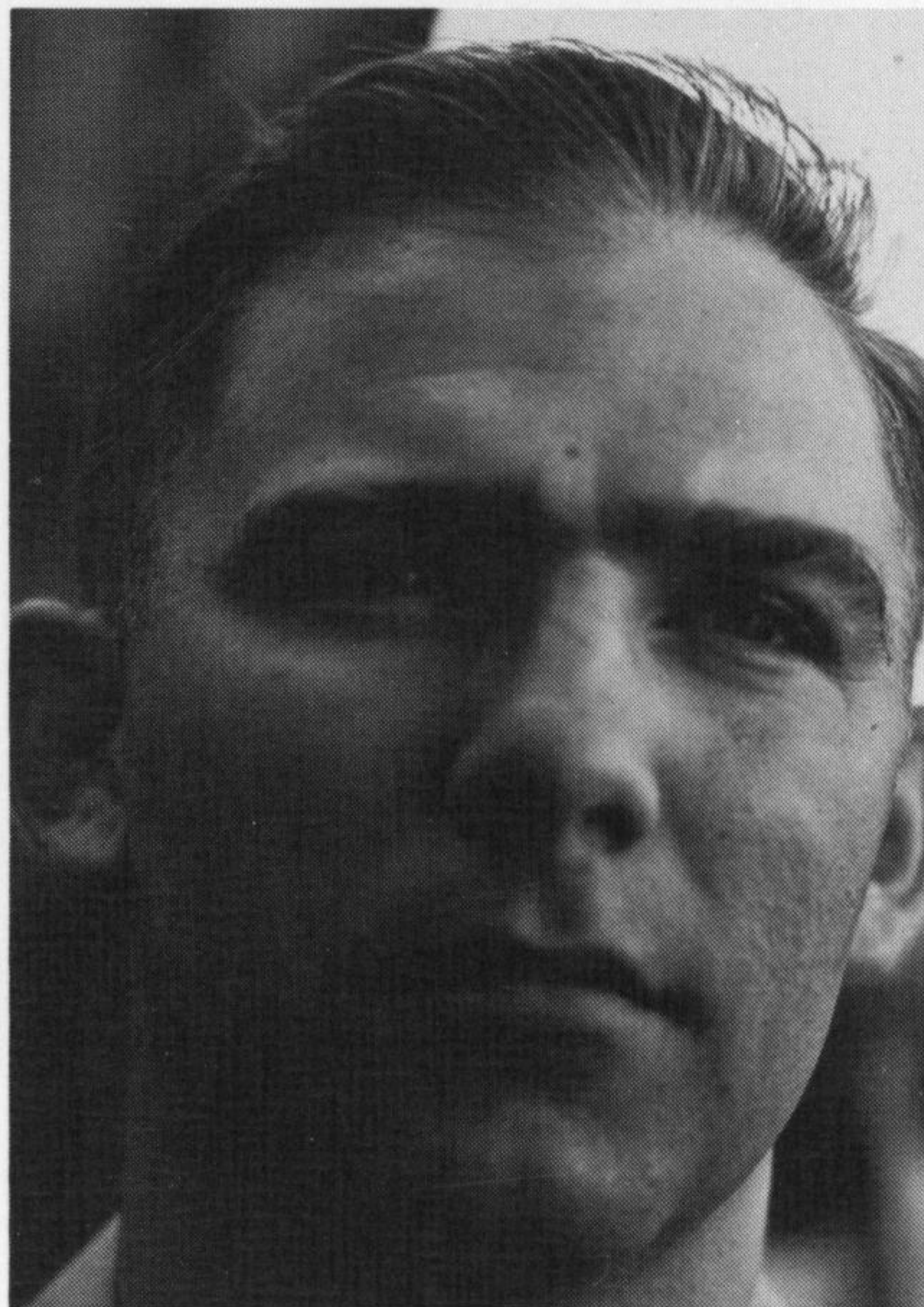


R DIVISION

R Division is composed of Damage controlmen and Shipfitters. They can patch holes in the hull and spearhead firefighting units; they comprise nuclear de-contamination and monitoring teams and can fabricate parts, patch pipes and rig emergency lighting to minimize the effects of damage.

LT. J. R. Dewey
Damage Control Asst.



SFC J. A. Bourgeois



ENC E. F. Burrucker

