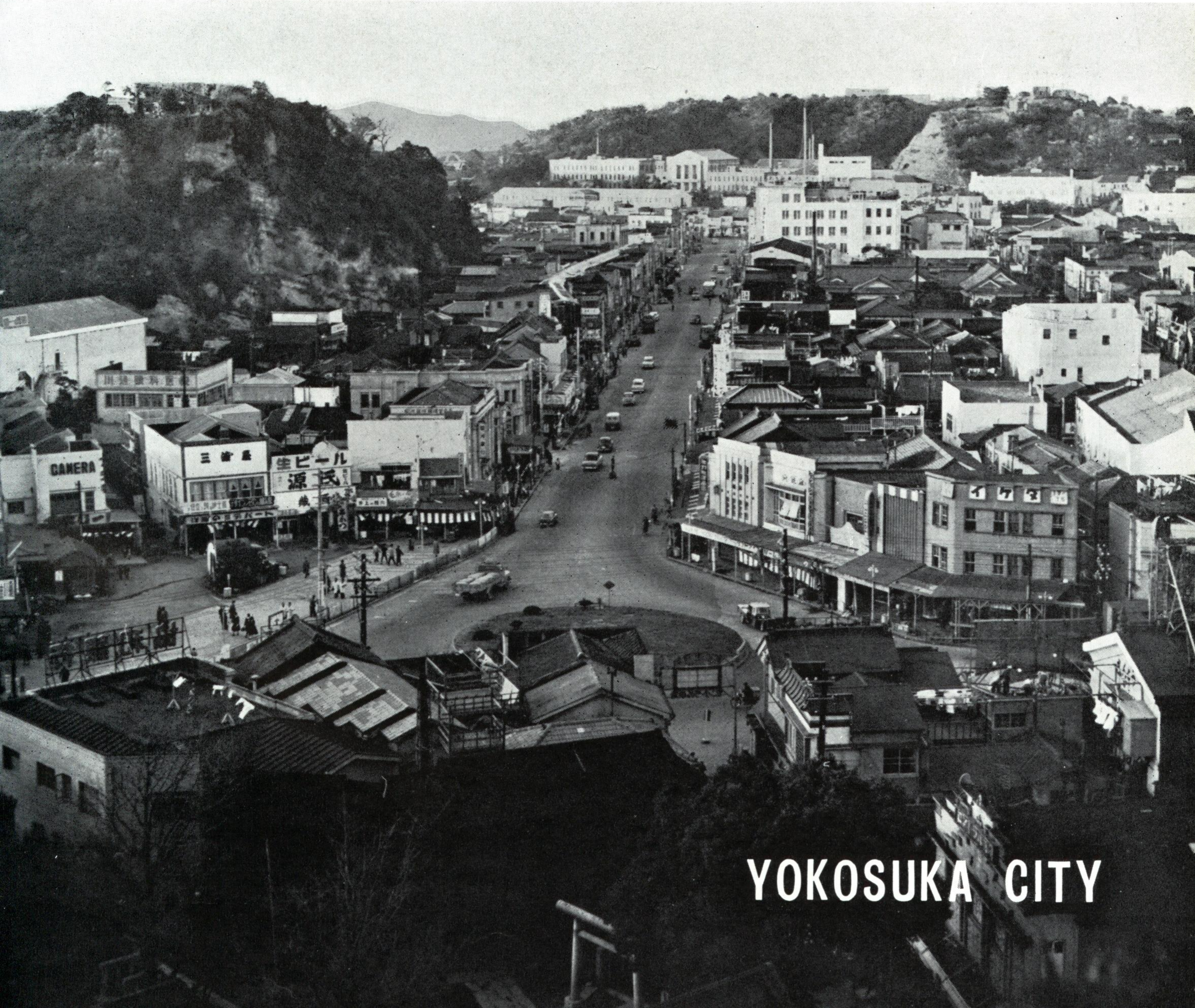


Japanese customs and dress were at first strange to us but we soon learned that the robe is a kimono, the sash is an obi, the clef-toed socks are tabi.

An obi is used primarily to shape the kimono and improve the figure while tabi are necessary for their footwear. Their shoes, either geta or zori, are held on the feet by a strap which runs between the big toe and the one adjacent. There is no large scale method of household heating and the Japanese substitute for the old potbellied stove is the Hibachi. Charcoal is burned in this little pot which is the nucleus for any gathering.



Hibachis are also very useful as a means of heating sake.



**YOKOSUKA CITY**